



Digital Transformation Starts with PLM: Building the Foundation

Why Product Lifecycle
Management Is the Key to
Modern Manufacturing Success



Digital Transformation in Manufacturing



In today's fast-paced global economy, digital transformation has become more than a buzzword: it's a survival strategy. Manufacturers across every industry are under pressure to design smarter products, bring them to market faster, and support them with world-class service.

But digital transformation isn't a single project or technology purchase. It's a journey of connecting people, processes, and data across the entire product lifecycle. Unfortunately, many organizations attempt to launch digital initiatives (like IoT, AR, or digital twins) without addressing the foundational systems that

keep product data accurate and accessible.

This is where Product Lifecycle Management (PLM) comes in. PLM may not always make the headlines, but it is the critical backbone of digital transformation. Without a modern PLM system, most digital initiatives stall or fail because they lack a single source of truth.

This eBook explores why PLM is the logical starting point for digital transformation, the capabilities it provides, and how Windchill can help your organization build a strong foundation for long-term success.

Why PLM is the Starting Point

At its core, PLM is about managing product data and processes across the lifecycle, from concept and design to manufacturing, service, and retirement. But modern PLM is more than data storage; it's the system of record that ensures product information is consistent, traceable, and accessible enterprise-wide.

For many manufacturers, PLM is the first step toward breaking down silos. By centralizing product data, PLM prevents duplication, reduces

errors, and ensures teams work from the same version of the truth.

Without PLM, digital transformation is built on shaky ground. Imagine trying to launch a digital twin initiative when you can't even guarantee that your engineering and manufacturing teams are looking at the same data. PLM establishes the foundation on which every other digital initiative depends.

The Building Blocks of Modern PLM

To understand how PLM drives digital transformation, let's look at its core building blocks:

SINGLE SOURCE OF TRUTH

- Centralizes product data in one secure location.
- Eliminates confusion and rework caused by multiple versions.

CHANGE & CONFIGURATION MANAGEMENT

- Structures workflows to ensure design changes are reviewed, approved, and implemented consistently.
- Reduces costly errors and delays.

CROSS-FUNCTIONAL COLLABORATION

- Ensures engineering, manufacturing, service, and suppliers have access to accurate product data.
- Breaks down silos and accelerates decision-making.

COMPLIANCE & TRACEABILITY

- Tracks every revision and decision, ensuring compliance with industry standards and regulatory requirements.
- Simplifies audits and reduces risk.

ENTERPRISE INTEGRATION

- Connects PLM with CAD, ERP, MES, and supply chain systems.
- Enables seamless data flow across the enterprise.

Together, these capabilities form the foundation that allows manufacturers to move confidently into advanced digital initiatives.

PLM as the Foundation for the Intelligent Product Lifecycle

The concept of the intelligent product lifecycle is central to digital transformation. It refers to the seamless flow of information across the product lifecycle from initial requirements through design, manufacturing, and service.

PLM is what anchors the intelligent product lifecycle. By ensuring that product data is consistent, traceable, and connected, PLM enables teams to build a digital representation of the product that evolves alongside the physical one.

I For example:

A change made in engineering is instantly visible to manufacturing and service teams.

Supplier updates automatically integrate into the product model.

Data collected from IoT-enabled products feeds back into engineering for continuous improvement.

Without PLM, this lifecycle unravels. With it, organizations create a backbone for innovation.



Extending PLM into Digital Transformation

Once the PLM foundation is in place, manufacturers can extend its value into broader digital transformation initiatives:

IoT (Internet of Things)

PLM integrates with IoT platforms like ThingWorx to connect product data with real-world performance data.

Enables predictive maintenance, usage analytics, and continuous improvement.

AR (Augmented Reality)

With PLM data feeding into AR tools like Vuforia, companies can deliver immersive training, service manuals, and interactive experiences.

Reduces service costs and improves customer satisfaction.

Digital Twin

A digital twin requires accurate product data as its foundation.

PLM provides the authoritative product definition that powers digital twin initiatives.

Analytics & AI

By leveraging PLM data, companies can apply analytics and AI to identify inefficiencies, predict quality issues, and optimize performance.

This integration shows that digital transformation doesn't start with IoT or AR — it starts with PLM.



Benefits of Building Digital Transformation on PLM

When PLM best practices are adopted, organizations realize benefits that cascade across the business:

Faster Time-to-Market:

Streamlined collaboration and fewer delays.

Reduced Errors & Rework:

Single source of truth eliminates costly mistakes.

Improved Compliance:

Built-in traceability ensures audit readiness.

Stronger Collaboration:

Enterprise-wide access supports global teams and suppliers.

Lower Total Cost of Ownership:

Fewer inefficiencies and reduced reliance on manual processes.

Future Readiness:

PLM establishes the foundation for IoT, AR, and digital twin initiatives.

These benefits not only improve day-to-day operations but also enable long-term competitiveness.



Why Windchill?

Not all PLM systems are created equal. Many older solutions lack scalability, integration, or support for modern digital initiatives. Windchill is built to deliver PLM as a true digital transformation enabler.



Industry-Leading PLM Capabilities

Robust data management, change control, and collaboration features.



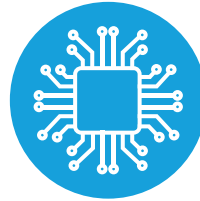
Enterprise Scalability

Supports global teams, complex products, and high-volume data.



Cloud-Ready Deployment

Flexible deployment options for faster adoption.



Seamless Integrations

Connects with Creo, ERP, MES, and other enterprise systems.



Future Extensions

Direct integration with ThingWorx IoT and Vuforia AR to expand PLM into broader transformation initiatives.

With Windchill, companies don't just manage product data. They build a foundation for innovation.



The Roadmap: Steps to Begin Your PLM Journey

Every digital transformation journey starts with a first step. Here's how to begin building your PLM foundation:

Assess Your Current State	Evaluate your current processes, tools, and data silos.	Identify gaps where PLM could add the most value.
Identify Quick Wins	Start with high-impact areas like change management or version control.	Demonstrate early value to build momentum.
Plan a Phased Rollout	Implement PLM in stages, expanding capabilities over time.	Balance speed with organizational readiness.
Align Leadership & Stakeholders	Ensure cross-functional buy-in from engineering, IT, manufacturing, and service.	Position PLM as a strategic enabler, not just an engineering tool.
Measure & Improve	Define KPIs for PLM success (e.g., reduction in rework, faster approvals).	Continuously optimize processes as adoption grows.



Next Steps



Digital transformation is no longer optional. It's essential for manufacturers to stay competitive. But without a strong foundation, digital initiatives risk collapsing under their own complexity.

PLM provides that foundation. By centralizing data, streamlining change management, and enabling collaboration, PLM ensures that every digital initiative is built on accurate, connected product information.

Windchill is the PLM system designed to help manufacturers take this critical first step. With its robust capabilities,

enterprise scalability, and seamless integrations, Windchill empowers organizations to build the intelligent product lifecycle, extend into IoT and AR, and realize the full promise of digital transformation.

Windchill can help your organization build a foundation for digital transformation. Reviewing the latest updates and features may reveal powerful capabilities your team is missing. Learn more in our guide, *What's New in Windchill?: A Look at the Latest Features and Enhancements*.

Next Step: [Read the Guide](#)

